



engineering art in dimensional metrology



Product Catalogue Ver 1.0

Snap Gauges

Snap Gauges




Our Snap Gauges are designed for quick inspection of outside diameter of work pieces.

 1- 400mm

 Customisation available

 Carbide | Steel

 Metric & Imperial

 **IS: 3455** (standard for manufacturing tolerance)

Specifications

Product Information

- We offer Snap gauges in Steel and Carbide. We also make gauges in Steel with measuring faces in Carbide.
- We also manufacture Snap Gauges to relevant I.S., B.S. and DIN standards based on customer requests from 1- 400mm diameter.
- Single ended and double ended types of snap gauges are available with proper marking of 'GO', NOGO & gauge identification.
- They are also designed as per customer specification for checking of length, thickness & groove diameters etc.

Unique Features

Features of Snap Gauges

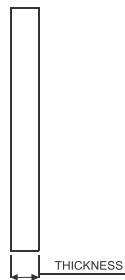
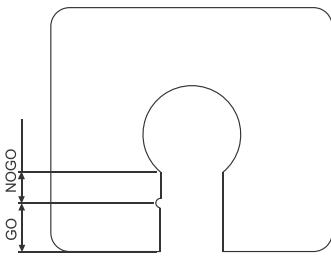
- High Durability
- High Tensile Strength



Certificate No. : C-0432

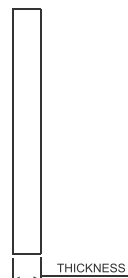
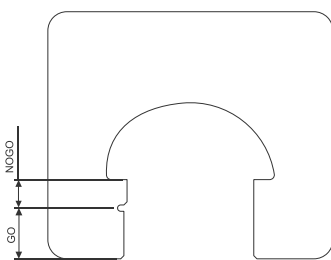
KCP Snap Gauges are supplied with Calibration Certificate issued from its accredited calibration lab.

Technical Specifications

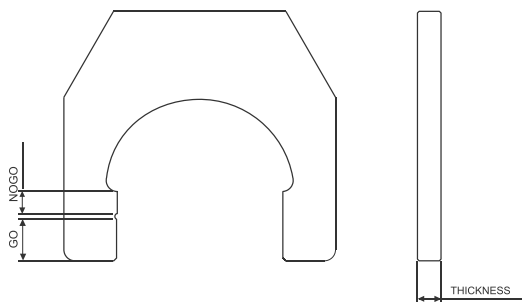


Type	Range	'GO' Length	'NO GO' Length	Thickness
Single Ended Snap Gauge Steel Blank (Carbide tipped/Steel)	1 – 10	12	7	6

* All figures in mm

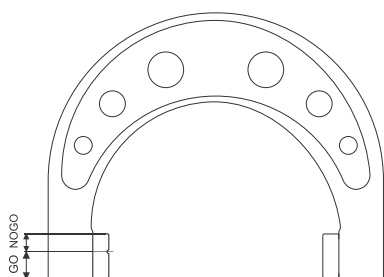


Type	Range	'GO' Length	'NO GO' Length	Thickness
Single Ended Snap Gauge Steel Blank (Carbide tipped /Steel)	10-16	12	7	6
	16-25	12	7	8.5
	25-32	12	7	8.5
	32-45	16	9	8.5



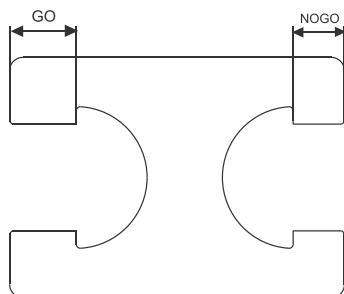
Type	Range	'GO' Length	'NO GO' Length	Thickness
Single Ended Snap Gauge Steel Blank (Carbide tipped/Steel)	45-60	16	9	8.5

* All figures in mm



Type	Range	'GO' Length	'NO GO' Length	Thickness
Single Ended Snap Gauge C.I. Blank (Carbide tipped/Steel)	60-150	15	10	10
	150-400	18	12	10

* All figures in mm



Type	Range	'GO' Length	'NO GO' Length	Thickness
Single Ended Snap Gauge Steel Blank (Carbide tipped /Steel)	1-10	8	5	6
	10-16	10	6	8.5
	16-25	12	8	8.5
	25-32	14	10	8.5
	32-40	16	12	8.5
	40-50	18	12	8.5
	50-65	20	13	8.5

* All figures in mm

precision begins here...



K C Precision

M 107/5/2, MIDC Waluj, Aurangabad 431136 (MS) INDIA. Ph: +91 (0)240 2555895 Telefax: +91 (0)240 2555898

Email: sales@kcpindia.com Web: www.kcpindia.com